

Gardenside Spring Restoration

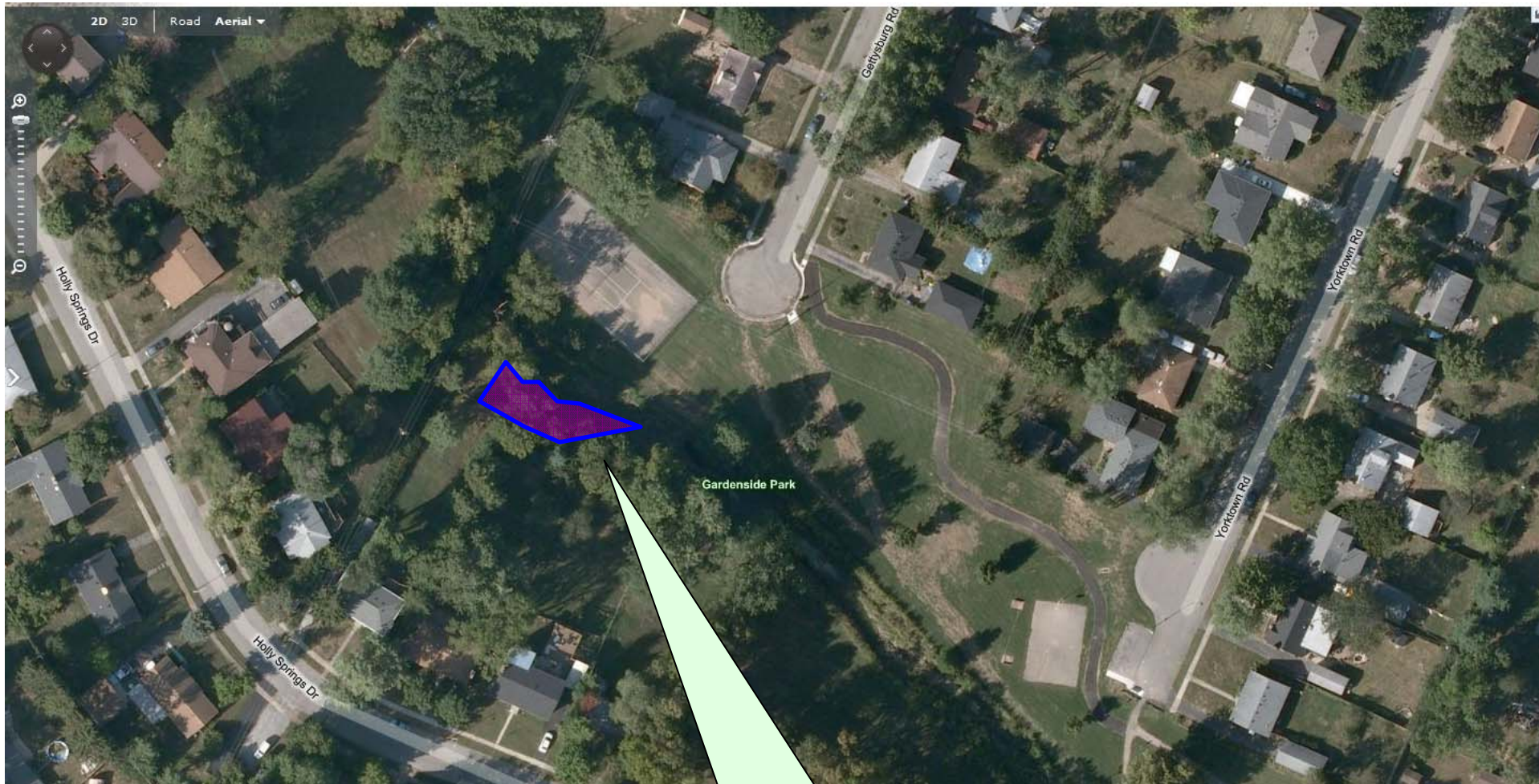
Project Description

The goal of the Gardenside Spring Restoration project is to help preserve and protect the historical spring located along Wolf Run. Gardenside spring is within Gardenside Park, a property owned and operated by LFUCG Division of Parks and Recreation. Funding for this project was awarded to Friends of Wolf Run, a non-profit organization that is coordinating efforts from both community volunteers and LFUCG staff.

The restoration process began by clearing out invasive exotic weeds, predominately Bush Honeysuckle, Wintercreeper, Garlic Mustard and Privet. Approximately 812.5 ft² was cleared on the floodplain (towards the southeast) with an additional 625 ft² cleared on the adjacent slope (towards the northwest). Altogether, nearly 1,438 ft² of invasive species was cleared around the spring. Bush Honeysuckle stumps greater than ¾" were treated with an application of glyphosate.

Once the landscape was opened up, the volunteers were able to start installing plants indigenous to Central Kentucky and could have been likely found along the site. Selected species include:

- (6) Rough-leaf Dogwood (*Cornus drummondii*)
- (15) Silky Dogwood (*Cornus amomum*)
- (14) Hydrangea (*Hydrangea macrophylla*)
- (3) Blue Flag Iris (*Iris versicolor*)
- (6) Lizard's Tail (*Saururus cernuus*)
- (15) Winterberry Holly (*Ilex verticillata*)



Project location

Nearly 1,438 ft² of invasive species was cleared around the spring.

